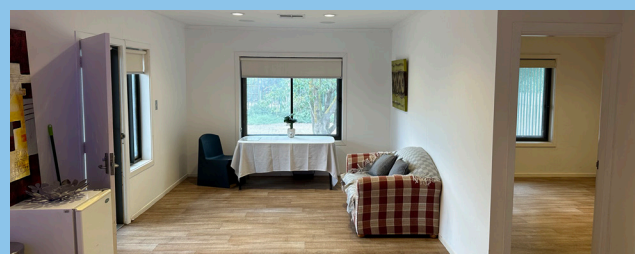


Supported Independent Living (SIL) Vacancy - Murray Bridge East



Property features

- Spacious 3 bedroom house, with 2 tenant bedrooms, each with own bathroom and lounge area
- Open plan communal kitchen, living and dining area
- Ducted heating and cooling in main living area and each bedroom
- Large low maintenance garden and plenty of room to start your own garden or any variety of projects
- Provision and maintenance of property features are the responsibility of the housing provider.

Location

Located on a secure, well fenced site on the outskirts of Murray Bridge, just a short 6km drive to the city centre. This large property provides privacy with country charm.

Local shopping centres, cafes, restaurants and Community Centres are nearby. Close to the Murray River for fishing, the men's shed, walks and many other recreational activities.

Funding & support model

- NDIS Supported Independent Living (SIL) funding is required
- Specialist Disability Accommodation (SDA) Category: Robust
- You will be required to pay for your share of rent and utilities.

Housing provider

- Unity Housing

Meet your housemate

I am a man in my mid 40s with an easy-going personality. I take pride in my appearance and home, and like to keep an organised home. I enjoy:

- Making jokes, laughing with others and listening to music
- Going for drives, walks and out into the community for shopping, activities and dining out.

I have no preference for female or male support staff. I require complex health support.

Make an enquiry

If you think you would be a good match, please contact our Cara Intake team to find out more:

- **Call:** 8347 4588
- **Email:** welcome@cara.org.au
- **Submit an online enquiry form**

Scan the QR code or visit www.bit.ly/SILvacancies for details of more SIL vacancies.





Support worker Irshad greeting a client



Anton with support worker Monish

We support people to find their possible

Fun, friendship, learning and independence is what we're all about at Cara. Our goal is to bring joy, purpose and a sense of belonging to our clients' lives.

Specialising in providing disability services for adults with severe and multiple disability, we are a registered NDIS provider and experts in supporting people with complex needs.

We are a not-for-profit organisation registered with the Australian Charities and Not-For-Profit Commission, or as we like to call it, 'profit-for-purpose' because all of our 'profit' goes back into supporting people with disability.

We are proud to deliver person-centred active support. This means we get to know you as an individual, your likes and dislikes, how you like to be supported and what your goals and dreams are, both big and small.

Our services

We understand the importance of having a welcoming and safe home and are leaders in providing supported accommodation to people with disability. That may be in-home support, short or medium term accommodation or supported independent living.

Locations

Cara operates all over South Australia, including metropolitan Adelaide, Mount Barker, Murray Bridge, Mount Gambier, Kadina, Port Augusta, Port Pirie and Port Lincoln, as well as surrounding areas.

Why choose Cara?

- As one of South Australia's leading disability providers we have **unparalleled depth of knowledge and skills**.
- We have a team of professionals who are **experts in their fields** and provide guidance on how to best support you.
- We have robust **quality and safeguarding** systems, policies and procedures to ensure you receive the best support.
- **Cara Connect** is our unique personalised service for Cara clients, their decision makers and support coordinators.

It doesn't stop there

Once you've transitioned to our service, your dedicated **Client Engagement Coordinator** from Cara Connect will:

- **Regularly check in** with you and your support network to hear your feedback on our service.
- Help you to **access supports** within your budget.
- Assist you or your Support Coordinator to have your **plan reassessed**.
- **Schedule** your services.
- Be the **single point of contact** at Cara for you and your support network.
- Stay up-to-date with the **latest NDIS changes**.