

Supported Independent Living (SIL) Vacancy - Port Augusta



1 vacancy



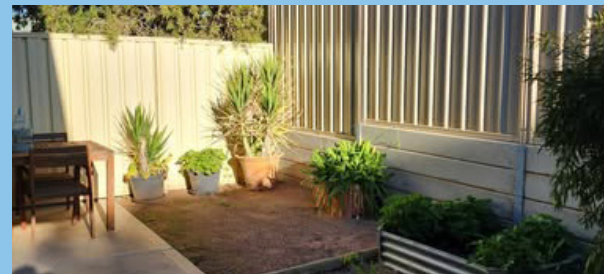
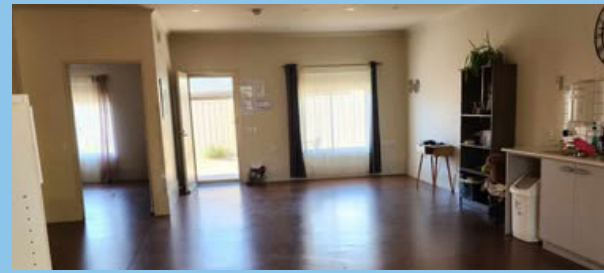
1 bedroom



1 bathroom



Wheelchair accessible



Property features

Looking for a secure, well-equipped home in a convenient location? This charming unit in a quiet cluster of three offers:

- Reverse cycle air conditioning in the lounge and both bedrooms,
- Open-plan kitchen, living, dining area,
- A secure backyard perfect for relaxing or entertaining. Suited for females who need an accessible home.
- Roller shutters on all front windows.

Location

Located close to the beach, less than 5-minute drive, for walks or fishing. Close proximity to the CBD for shopping, Hospitals and GP's. Inclusive Basketball ran in the region yearly.

Funding & support model

- NDIS Supported Independent Living (SIL) funding is required. Other appropriate funding may be considered
- Specialist Disability Accommodation (SDA) Category: Basic
- You will be required to pay for your share of rent and utilities.

Housing provider

- Uniting Country SA Ltd

Meet your neighbours

We are two females in our mid 20's to late 30's, who enjoy:

- A fun, supportive, and community-focused lifestyle
- Being active and playing sports – always up for a game or a walk
- Spending time with family – family values are important here.

We prefer female support staff and would like our new neighbour to be **female**.

Make an enquiry

If you think you would be a good match, please contact our Cara Intake team to find out more:

- **Call:** 8347 4588
- **Email:** welcome@cara.org.au
- **Visit:** www.bit.ly/SIL_PortAugusta

Scan the QR code or visit
www.bit.ly/SILVacancies
 for details of more SIL
 vacancies.





Registered
NDIS
Provider



Kylie with support worker Kelsey



Anton with support worker Monish

We support people to find their possible

Fun, friendship, learning and independence is what we're all about at Cara. Our goal is to bring joy, purpose and a sense of belonging to our clients' lives.

Specialising in providing disability services for adults with severe and multiple disability, we are a registered NDIS provider and experts in supporting people with complex needs.

We are a not-for-profit organisation registered with the Australian Charities and Not-For-Profit Commission, or as we like to call it, 'profit-for-purpose' because all of our 'profit' goes back into supporting people with disability.

We are proud to deliver person-centred active support. This means we get to know you as an individual, your likes and dislikes, how you like to be supported and what your goals and dreams are, both big and small.

Our services

We understand the importance of having a welcoming and safe home and are leaders in providing supported accommodation to people with disability. That may be in-home support, short or medium term accommodation or supported independent living.

Locations

Cara operates all over South Australia, including metropolitan Adelaide, Mount Barker, Murray Bridge, Mount Gambier, Kadina, Port Augusta, Port Pirie and Port Lincoln, as well as surrounding areas.

Why choose Cara?

- As one of South Australia's leading disability providers we have **unparalleled depth of knowledge and skills**.
- We have a team of professionals who are **experts in their fields** and provide guidance on how to best support you.
- We have robust **quality and safeguarding** systems, policies and procedures to ensure you receive the best support.
- **Cara Connect** is our unique personalised service for Cara clients, their decision makers and support coordinators.

It doesn't stop there

Once you've transitioned to our service, your dedicated **Client Engagement Coordinator** from Cara Connect will:

- **Regularly check in** with you and your support network to hear your feedback on our service.
- Help you to **access supports** within your budget.
- Assist you or your Support Coordinator to have your **plan reassessed**.
- **Schedule** your services.
- Be the **single point of contact** at Cara for you and your support network.
- Stay up-to-date with the **latest NDIS changes**.

