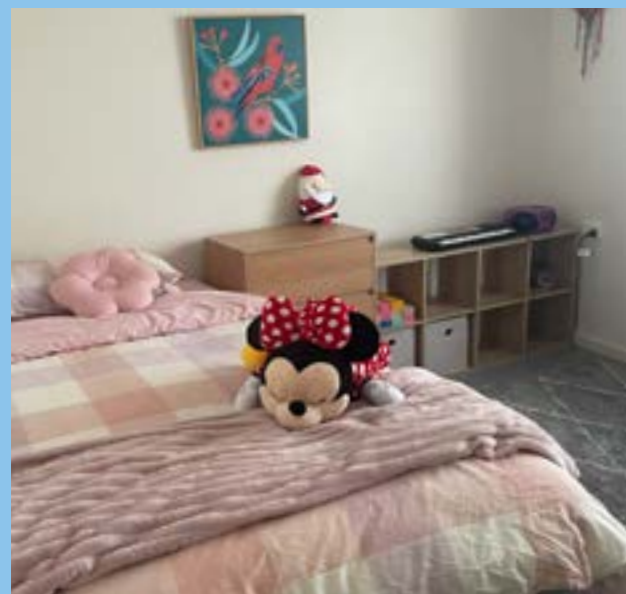


Short Term Respite (STR) Port Lincoln

A relaxing break in the Eyre Peninsula at Cara's coastal haven





Come and stay

Enjoy a restful break nestled in the heart of Port Lincoln with Cara's tailored support.

Cara's welcoming STR provides:

- Three private bedrooms,
- Shared open-plan accessible kitchen, living and meals area
- Separate additional cozy lounge area
- Electric hi-lo beds and a range of accessible equipment
- Spacious undercover BBQ, entertaining, and backyard area
- Heating/cooling

Relax and enjoy

STR is staffed by Cara's caring, qualified and enthusiastic team who work with you so you get the break you deserve. Our staff will get to know you, your needs and interests, what you enjoy doing for fun and what you don't, so you can have a great time while staying with Cara.

Staying in STR provides an opportunity for you to increase your independence, grow in confidence, enjoy new experiences and meet other like-minded people. STR can also provide a great stepping stone to Supported Independent Living (also known as SIL). Many of Cara's SIL clients started their journey with Cara in STR.

Why choose Cara?

- As one of South Australia's leading disability providers we have **unparalleled depth of knowledge and skills**.
- We have a team of professionals who are **experts in their field** and provide guidance on how to best support you.
- We have robust **quality and safeguarding** systems, policies and procedures to ensure you receive the best support.

Let's talk

Contact our Intake team by emailing welcome@cara.org.au or phone **08 8347 4588**.

For more information go to our website
www.cara.org.au

