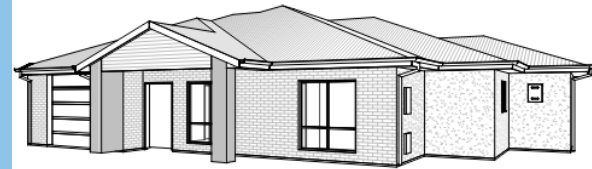


Supported Independent Living (SIL)

New build vacancy - Ingle Farm

 1 vacancy  3 bedrooms  3 bathrooms  Wheelchair accessible



Available April 2026

Property features

- New build Specialist Disability Accommodation (SDA), meeting High Physical Support with On-site Overnight Assistance (OOA)
- 2 spacious tenant bedrooms with ensuite and ceiling hoist provision
- Spacious, open-plan kitchen, living and dining area
- Designer kitchen with appliances
- Split system reverse cycle air conditioning in each tenant bedroom and ducted reverse cycle air conditioning in living area
- Outdoor undercover alfresco entertainment area
- Hybrid flooring in living areas, tiles in bathrooms, double-glazed windows, solar panels, accessible clothesline, wheelchair charging space, video intercom, fire sprinklers and emergency power backup.

Location

- Within a 10-minute drive to Mobery Hospital
- A five-minute drive brings you to Ingle Farm shopping centre
- Adelaide City Centre within a 30-minute drive.

Funding & support model

- NDIS Supported Independent Living (SIL) funding is required
- Specialist Disability Accommodation (SDA) Category: High Physical Support
- Rent and board fees apply.

SDA provider



Make an enquiry

Think this sounds good? Your next step is to contact the Cara Intake Team.

- PH: 8347 4588
- E: welcome@cara.org.au
- W: cara.org.au

View this property here: www.bit.ly/IngleFarmSDAVacancy

Scan the QR code for more Cara vacancies.





Registered
NDIS
Provider



Kylie with support worker Kelsey



Anton with support worker Monish

We support people to find their possible

At Cara, we're all about **fun, friendship, learning and independence**. Our mission is to bring **joy, purpose and belonging** to the lives of people we support.

We specialise in disability services for **adults with severe and multiple disabilities**. As a registered NDIS provider, we're experts in supporting people with **complex needs**, for over 76 years.

Cara is a **South Australian leading, trusted not-for-profit organisation**, putting every dollar back into our **client centric** model of supports.

We deliver **person-centred active support**, getting to know your likes, dislikes, and goals, big or small, so you can live life your way.

Cara brings **unmatched expertise and experience** to every person we support. Our team of professionals are **experts in their fields**, offering guidance to ensure you receive the best possible support.

We back this with **robust quality and safeguarding systems**, so you can feel confident and secure.

Our services

- Supported Independent Living (SIL)
- Short & Medium-Term Respite (STR)
- Home & Community Support (HCS)
- Day Options

Locations

Across South Australia: Adelaide, Mount Barker, Murray Bridge, Mount Gambier, Kadina, Port Augusta, Port Pirie, Port Lincoln, and surrounding areas.

It doesn't stop there

Once you've transitioned to our service, our **dedicated teams** will:

- **Regularly check in** with you and your circle of support to hear your feedback on our service.
- Help you to **access supports** within your budget.
- Assist you or your Support Coordinator to have your **plan reassessed**.
- **Schedule** your services.
- Dedicate a **single point of contact** at Cara for you and your support network.
- Stay up-to-date with the **latest NDIS changes**
- **Monthly social catch-ups**
- Access to inclusive Cara Partner events

*We're not a disability service,
we're a Possibility service.*

