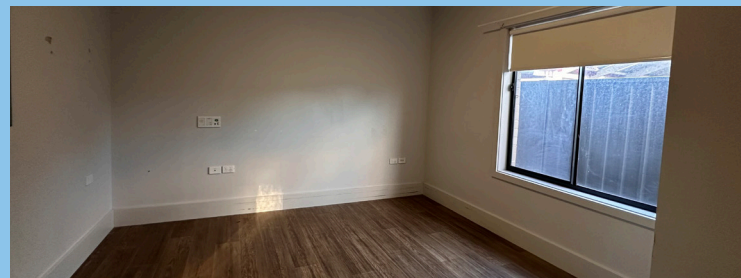


Supported Independent Living (SIL) Vacancy - Torrensville

 2 vacancies
  4 bedrooms
  2.5 bathrooms
  Wheelchair accessible



Property features

In the vibrant inner-west suburb of Torrensville, offering comfortable living in a highly sought-after location. Featuring a beautifully maintained backyard, it's perfect for relaxing outdoors or entertaining. The home is designed for ease and comfort, with a practical layout and quality finishes throughout.

- Ducted air conditioning for heating and cooling
- Large, well maintained backyard
- Provision and maintenance of property features are responsibility of housing provider.

Location

Well-connected environment, close to local amenities, services, and public transport including Ashford Hospital and Royal Adelaide Hospital, Brickworks Marketplace and Thebarton Aquatic Centre.

Funding & support model

- NDIS Supported Independent Living (SIL) funding is required. Other appropriate funding may be considered
- Specialist Disability Accommodation (SDA) Category: Basic
- You will be required to pay for your share of rent and utilities.

Housing provider

- Unity Housing

Meet your housemates

We are two males aged in our late 40s to 60s. We're down-to-earth and enjoy:

- Going to the pub for lunch
- Train and plane spotting
- Hosting BBQs - good food, laughs, and great company

Suited to **males** who need an accessible home.

Make an enquiry

Think this sounds good? Your next step is to contact the Cara Intake Team.

- PH: 8347 4588
- E: welcome@cara.org.au
- W: cara.org.au

View this property here: www.bit.ly/SIL_Torrensville

Scan the QR code for more Cara vacancies.





Registered
NDIS
Provider



Kylie with support worker Kelsey



Anton with support worker Monish

We support people to find their possible

At Cara, we're all about fun, friendship, learning and independence. Our mission is to bring joy, purpose and belonging to the lives of people we support.

We specialise in disability services for adults with severe and multiple disabilities. As a registered NDIS provider, we're experts in supporting people with complex needs, for over 76 years.

Cara is a South Australian leading, trusted not-for-profit organisation, putting every dollar back into our client centric model of supports.

We deliver person-centred active support, getting to know your likes, dislikes, and goals, big or small, so you can live life your way.

Cara brings unmatched expertise and experience to every person we support. Our team of professionals are experts in their fields, offering guidance to ensure you receive the best possible support.

We back this with robust quality and safeguarding systems, so you can feel confident and secure.

Our services

- Supported Independent Living (SIL)
- Short & Medium-Term Respite (STR)
- Home & Community Support (HCS)
- Day Options

Locations

Across South Australia: Adelaide, Mount Barker, Murray Bridge, Mount Gambier, Kadina, Port Augusta, Port Pirie, Port Lincoln, and surrounding areas.

It doesn't stop there

Once you've transitioned to our service, our dedicated teams will:

- Regularly check in with you and your circle of support to hear your feedback on our service.
- Help you to access supports within your budget.
- Assist you or your Support Coordinator to have your plan reassessed.
- Schedule your services.
- Dedicate a single point of contact at Cara for you and your support network.
- Stay up-to-date with the latest NDIS changes
- Monthly social catch-ups
- Access to inclusive Cara Partner events

*We're not a disability service,
we're a Possibility service.*

