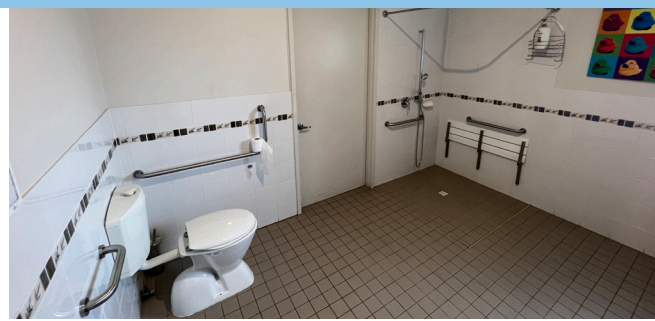


Short Term Accommodation

Short Stay

Morphettville





A home away from home

The **Short Stays** experience is designed for you to relax while building skills you can take home. You'll have your own private bedroom, as well as the opportunity to socialise with others.

Our Morphettville Short Term Accommodation (also known as STA) service is a spacious family-style home with modern facilities, centrally located between Glenelg beach and the city.

Our Morphettville STA house offers:

- Five spacious and accessible private bedrooms.
- Two shared ensuite bathrooms.
- Overhead hoist system in bedrooms and bathrooms.
- Shared open-plan accessible kitchen, living and meals area.
- Separate lounge area.
- Fully equipped laundry.
- Spacious undercover outdoor area.
- Large well maintained garden and accessible veggie patch.
- Ducted heating/cooling.

Relax and enjoy

STA is staffed by our professional, caring and passionate support workers who are trained to support people with disability, including those with high health needs. They will get to know you, your needs and interests, what you enjoy doing for fun and what you don't, so you can have a great time while staying with Cara.

Staying in STA provides an opportunity for you to increase your independence, grow in confidence, enjoy new experiences and meet other like-minded people. STA can also provide a great stepping stone to Supported Independent Living (also known as SIL). Many of Cara's SIL customers started their journey with Cara in STA.

Why choose Cara?

- As one South Australia's leading disability providers we have **unparalleled depth of knowledge and skills**.
- **Cara Connect** is our unique personalised service for Cara customers, their decision-makers and support coordinators. Think of our Cara Connect Team as your partner for your journey with Cara and the NDIS.
- We have a team of Practice Leaders who are **experts in their field** and provide guidance on how we can best support you.
- We have robust **quality and safeguarding** systems, policies and procedures to ensure you receive the best support.

Let's talk

Contact our Intake and Growth team by emailing **welcome@cara.org.au** or phone **08 8347 4588**.



Registered NDIS Provider

For more information go to our website **www.cara.org.au**

